



**SIGHTLINE**

# PRODUCT FEATURES



## ERGONOMIC MONITOR MOUNTS

Provide the ultimate in adjustability and sightline optimization.

## VERSA-TRAK

Mounting system allows infinite adjustability for monitor arms.

## MODERN DESIGN

Open and closed base versions offer unmatched design possibilities.

## MULTI SURFACES

Work surface options include MDF and compact laminate. Single and dual work surface models provide the ideal workspace for any operator.

## TOTAL ACCESS CABLE MANAGEMENT

Ample cable management is well-designed, convenient and easy to access.

## HEIGHT ADJUSTABLE

Stationary and sit/stand models to accommodate any control room configuration.

## SOFT TOUCH LOCKING DOORS

Extra-sturdy to support a CPU shelf or file/storage bin.

## ACCESSORY PACKAGES

Pre-configured for Security, Command & Control, Process Control, Traffic Management, Broadcast and PSAP. Custom configurations available for other applications.







## SIGHTLINE STATIONARY



**CLOSED BASE**



**OPEN BASE**



## SIGHTLINE STATIONARY WITH RADIAL CREDENZA



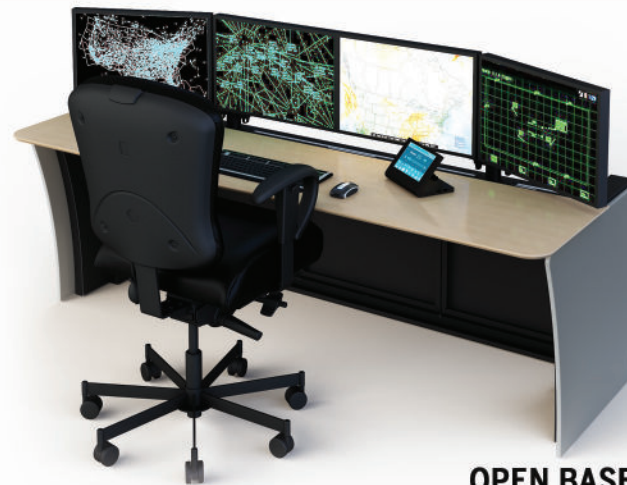




**SIGHTLINE HIGH DENSITY (HD)**



**CLOSED BASE**



**OPEN BASE**





**SIGHTLINE CLOSED BASE**





**OPEN BASE**



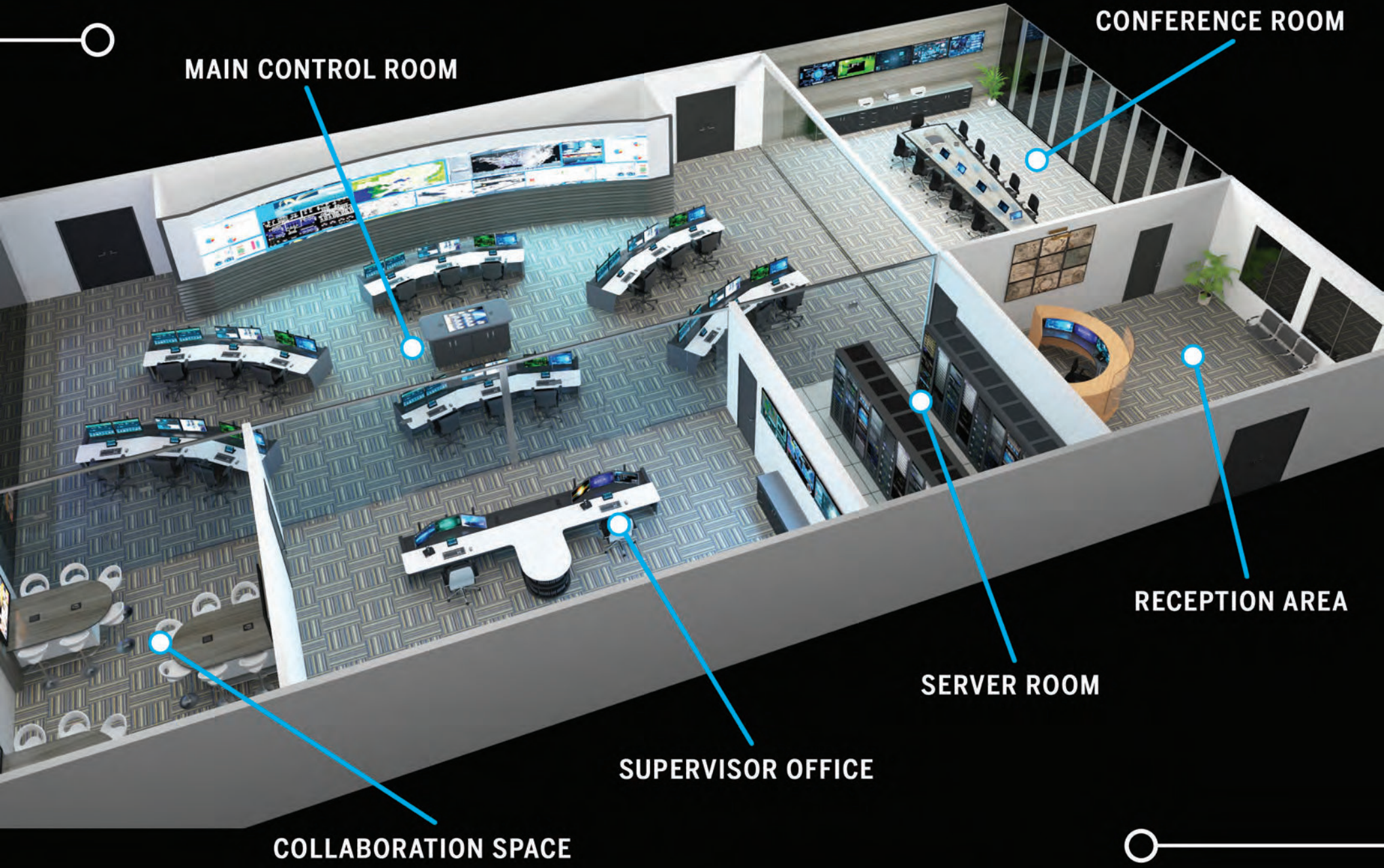
**CLOSED BASE**

## **SIGHTLINE SIT/STAND (A) WITH PENINSULA**





# CONTROL ROOMS & MORE!



MAIN CONTROL ROOM

CONFERENCE ROOM

RECEPTION AREA

SERVER ROOM

SUPERVISOR OFFICE

COLLABORATION SPACE



# WORK SURFACE OPTIONS



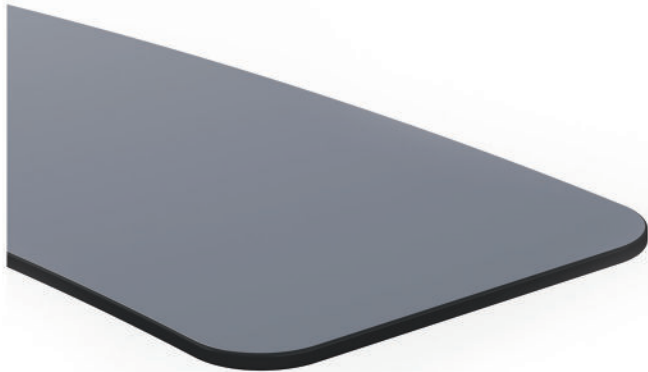
## SAFEGUARD EDGE

- Durable high-pressure plastic laminate surface
- Optional textures and gloss levels available
- Easy to clean and maintain
- Safeguard Edge provides exceptional durability
- Black PVC Edge



## COMFORT EDGE

- Permanently bonded black urethane creates a long-lasting, water-tight seam with a smooth matte finish
- Ergonomic profile provides comfort and reduces the risk of injury
- Antibacterial and anti fungal additives promote a healthy work environment
- UV resistant urethane will not change color or deteriorate over time
- Suitable for the most demanding 24/7 control room operation



## COMPACT LAMINATE

- A very durable material that is widely used in commercial installations
- Low-maintenance, stain-repellent material that needs minimal cleaning
- Non-toxic, non-polluting and completely hygienic
- Moisture-proof, waterproof and mildew resistant
- Anti-static, antibacterial and UV resistant
- Contemporary design aesthetic



## SOLID SURFACE

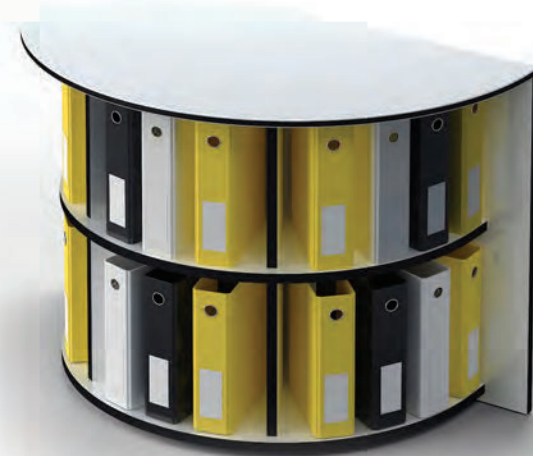
- Easy to clean and stain-resistant because liquid cannot penetrate its surface
- Durability and renewability with common abrasive cleaners reduce the need for replacement, which makes it inherently environmentally friendly
- Joints are unobtrusive and impermeable with a seamless appearance
- Colors and patterns penetrate through the surface and cannot wear away
- Hygienic nonporous surface that is inert, non-toxic, and chemically unreactive
- Hypoallergenic and fire-resistant



# TECHNICAL FURNITURE



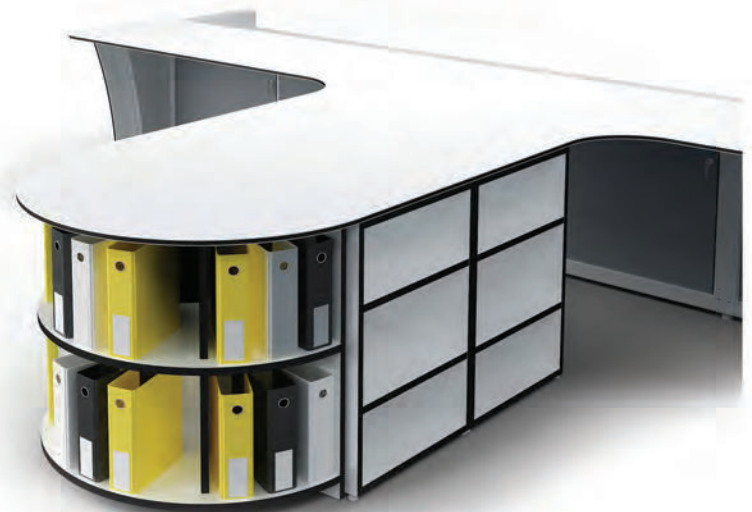
**TECHNOLOGY CREDENZAS**



**RADIAL CREDENZAS**



**LINEAR PENINSULAS**



**RADIAL PENINSULAS**



# TECHNICAL FURNITURE



**COLLABORATION TABLES**



**CONFERENCE ROOM TABLES**



**MILLWORK CREDENZAS**



**RECEPTION DESKS**



# OPTIONS AND ACCESSORIES



**ERGONOMIC MONITOR MOUNTS**



**DYNA-LINQ POWER SYSTEM**



**DOOR-MOUNTED CPU SHELF**



**BROAD RANGE OF PRODUCTS**



# HIGH PERFORMANCE SEATING

## CONCEPT SEATING

- Durability for Constant Usage
- High Weight Capacity
- Comfort for Long Periods of Sitting
- 24/7 Testing
- Warranty
  - » 10-year on seat pan
  - » 6-year on all other parts
  - » 2-year free shipping on parts





## 3D DESIGN PROCESS

The Winsted 3D Design process is a comprehensive, collaborative procedure put in place to ensure that no detail is overlooked and that every customer is presented with the ideal solution for their unique application.



## CONSOLE DESIGN SOFTWARE

WELS is a Winsted-exclusive FREE console design software that makes control room design and layout fast, easy, accurate and fun! Download your copy today at [winsted.com](http://winsted.com)



# WINSTED IS AT YOUR SERVICE



## ON-SITE CONSULTATION

Winsted designers have a keen eye for the details, which is why an initial on-site consultation is on us. We will collect the necessary measurements, document structures and note the items necessary for success.



## CUSTOMER CARE GUARANTEE

Critical steps have been developed to ensure each and every customer receives their product as expected; on-time and complete in pristine condition and ready for install.