

winsted



VUE

PRODUCT FEATURES



SYNERGY TOUCH CONTROL

State-of-the-art system with touch panel controls work surface height, heating & cooling and lighting.

ERGONOMIC MONITOR MOUNTS

Provide the ultimate in adjustability and sightline optimization.

VERSA-TRAK

Mounting system allows infinite adjustability for monitor arms.

MODERN DESIGN

Open and closed base versions offer unmatched design possibilities.

MULTI SURFACES

Work surface options include MDF and compact laminate. Single and dual work surface models provide the ideal workspace for any operator.

TOTAL ACCESS CABLE MANAGEMENT

Ample cable management is well-designed, convenient and easy to access.

HEIGHT ADJUSTABLE

Stationary and sit/stand models to accommodate any control room configuration.

SOFT TOUCH LOCKING DOORS

Extra-sturdy to support a CPU shelf or file/storage bin.

ACCESSORY PACKAGES

Pre-configured for Security, Command & Control, Process Control, Traffic Management, Broadcast and PSAP. Custom configurations available for other applications.





VUE A & P OPEN BASE



STATIONARY CONSOLE



SIT/STAND CONSOLE



OPEN BASE



CLOSED BASE

VUE X & L STATIONARY OR SIT/STAND





VUE L & A STATIONARY OR SIT/STAND



OPEN AND CLOSED BASE



OPEN BASE



VUE C STATIONARY OR SIT/STAND



OPEN BASE

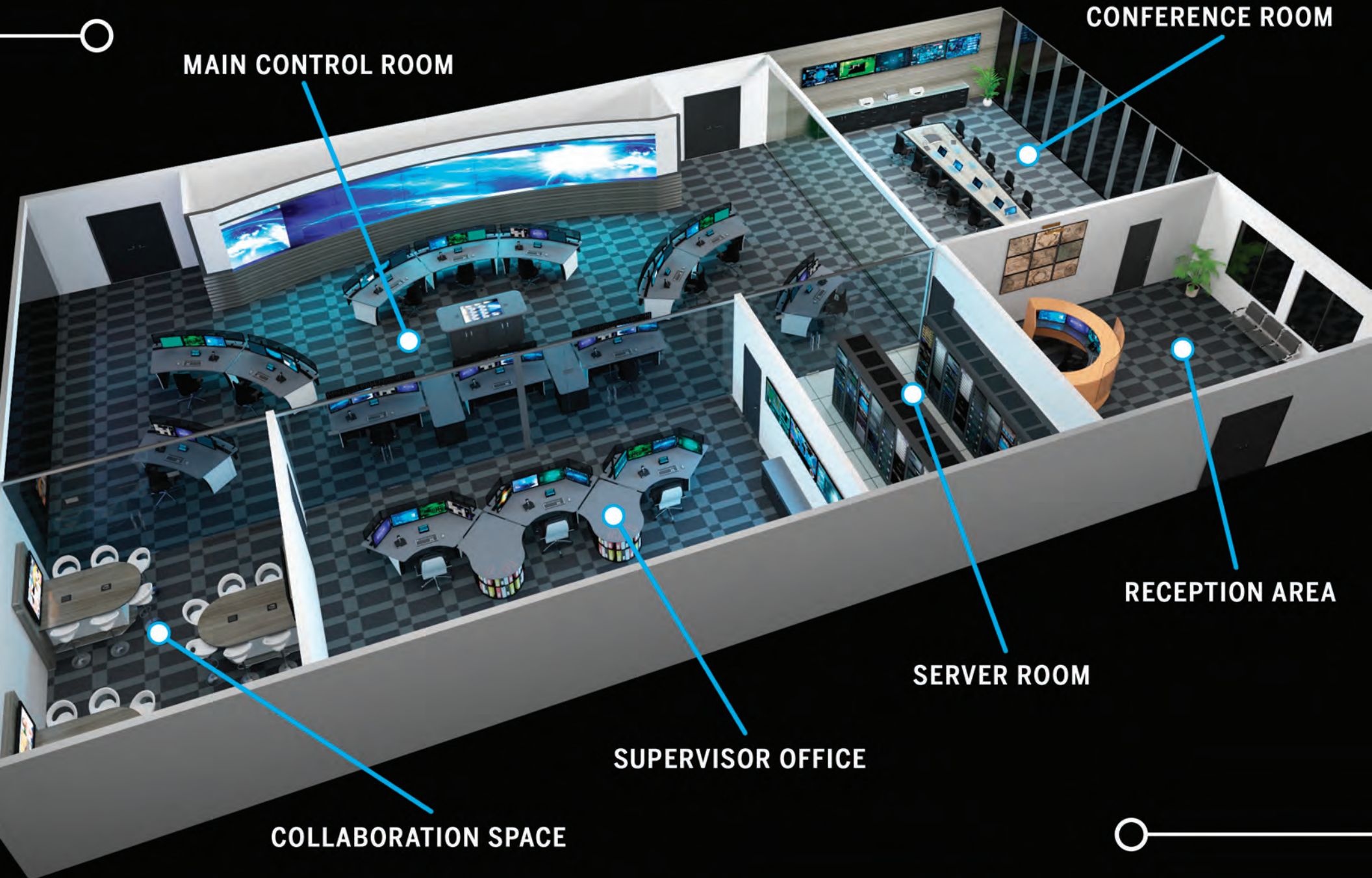


CLOSED BASE

VUE X & L WITH ILLUMINATED ACOUSTICAL PANEL



CONTROL ROOMS & MORE!



SYNERGY TOUCH CONTROL



SYNERGY

FEATURES

- Work Surface Height Adjustment
- Monitor Height Adjustment
- Personal Environmental Control System
- Console, Task and Status Lighting
- Nutritemp System - Insulated Drawer and Cup Warmer
- System Volume
- Wired Connectivity
- (3) USB-A, (1) USB-C and (1) USB Micro for Personal Charging

WORK SURFACE OPTIONS



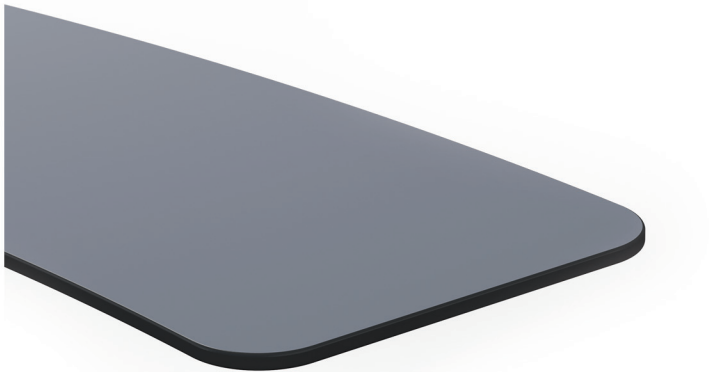
SAFEGUARD EDGE

- Durable high-pressure plastic laminate surface
- Optional textures and gloss levels available
- Easy to clean and maintain
- Safeguard Edge provides exceptional durability
- Black PVC Edge



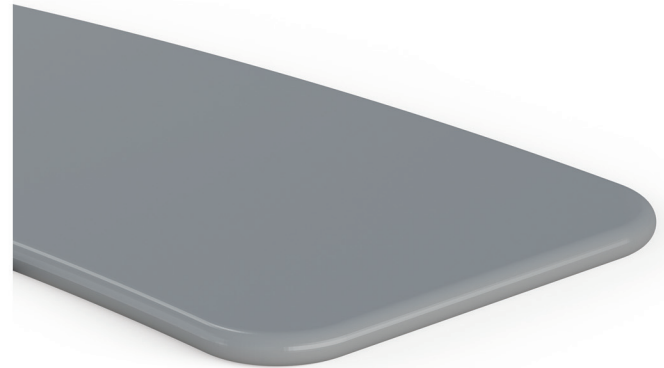
COMFORT EDGE

- Permanently bonded black urethane creates a long-lasting, water-tight seam with a smooth matte finish
- Ergonomic profile provides comfort and reduces the risk of injury
- Antibacterial and anti fungal additives promote a healthy work environment
- UV resistant urethane will not change color or deteriorate over time
- Suitable for the most demanding 24/7 control room operation



COMPACT LAMINATE

- A very durable material that is widely used in commercial installations
- Low-maintenance, stain-repellent material that needs minimal cleaning
- Non-toxic, non-polluting and completely hygienic
- Moisture-proof, waterproof and mildew resistant
- Anti-static, antibacterial and UV resistant
- Contemporary design aesthetic



SOLID SURFACE

- Easy to clean and stain-resistant because liquid cannot penetrate its surface
- Durability and renewability with common abrasive cleaners reduce the need for replacement, which makes it inherently environmentally friendly
- Joints are unobtrusive and impermeable with a seamless appearance
- Colors and patterns penetrate through the surface and cannot wear away
- Hygienic nonporous surface that is inert, non-toxic, and chemically unreactive
- Hypoallergenic and fire-resistant

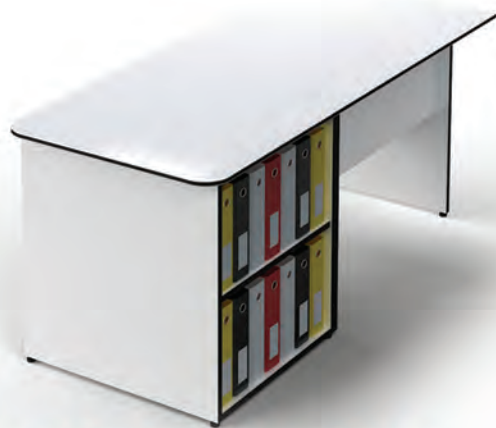
TECHNICAL FURNITURE



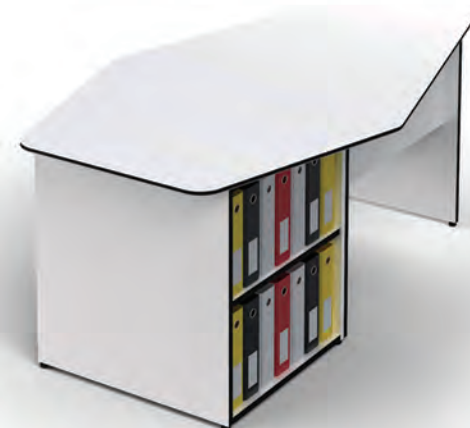
TECHNOLOGY CREDENZAS



RADIAL CREDENZAS



LINEAR PENINSULAS



ANGLED PENINSULAS

TECHNICAL FURNITURE



COLLABORATION TABLES



CONFERENCE ROOM TABLES



MILLWORK CREDENZAS

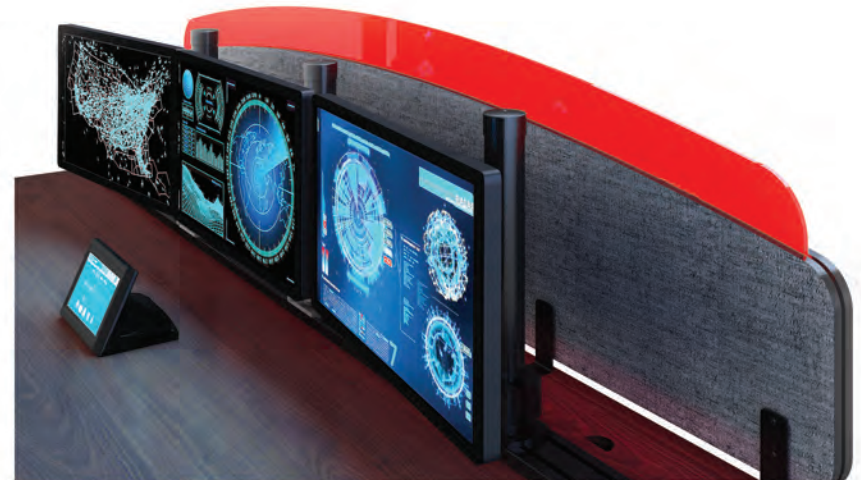


RECEPTION DESKS

OPTIONS AND ACCESSORIES



ERGONOMIC MONITOR MOUNTS



STATUS, TASK AND AMBIENT LIGHTING



ILLUMINATED ACOUSTICAL PARTITIONS



BROAD RANGE OF PRODUCTS

HIGH PERFORMANCE SEATING

CONCEPT SEATING

- Durability for Constant Usage
- High Weight Capacity
- Comfort for Long Periods of Sitting
- 24/7 Testing
- Warranty
 - » 10-year on seat pan
 - » 6-year on all other parts
 - » 2-year free shipping on parts



3D DESIGN PROCESS

The Winsted 3D Design process is a comprehensive, collaborative procedure put in place to ensure that no detail is overlooked and that every customer is presented with the ideal solution for their unique application.



CONSOLE DESIGN SOFTWARE

WELS is a Winsted-exclusive FREE console design software that makes control room design and layout fast, easy, accurate and fun! Download your copy today at winsted.com



WINSTED IS AT YOUR SERVICE



ON-SITE CONSULTATION

Winsted designers have a keen eye for the details, which is why an initial on-site consultation is on us. We will collect the necessary measurements, document structures and note the items necessary for success.



CUSTOMER CARE GUARANTEE

Critical steps have been developed to ensure each and every customer receives their product as expected; on-time and complete in pristine condition and ready for install.